



Multidimensional Biomagnetism

Alberto Arribalzaga

Hello everybody, it is nice to be in contact with all you people in the light!

1 – INTRODUCTION

First of all, I have to thank John Thie and TFH School, because they have given me so many comprehensions about myself, attitudes, feelings and the tool of kinesiology.

I would like to share with you this specific work that is **great and easy** and can give you all excellent results, much further than I myself believed when I started to balance with magnets to get rid of viruses, bacteria, fungus, parasites...6 years ago.

It was the way into a fascinating multidimensional world that has given me a great understanding about how Body/Blood/Genetics/Soul/Energy interact and the way our consciousness melds them in a magnificent way.

Initially I call this system:

“MULTIDIMENSIONAL BIOMAGNETISM”

It is multidimensional because it takes us farther than the ordinary dimensions within which magnets have been used: tools to stimulate, sedate, or balance acupuncture points and flows of energy in a general

context of polarity.

I have found (or it's been given to me) that there are HOLLOWGRAPHIC MAPS or combinations which are related in how GENETICS and the SOUL itself manifest in life interacting with the body.

2 – HEALING MODEL

In the Model that I use for healing, I attempt to consider all the MAIN FACTORS in the universe of human being according to my believes and when I find something that gives some kind of consciousness and a way to use it, I include it immediately.

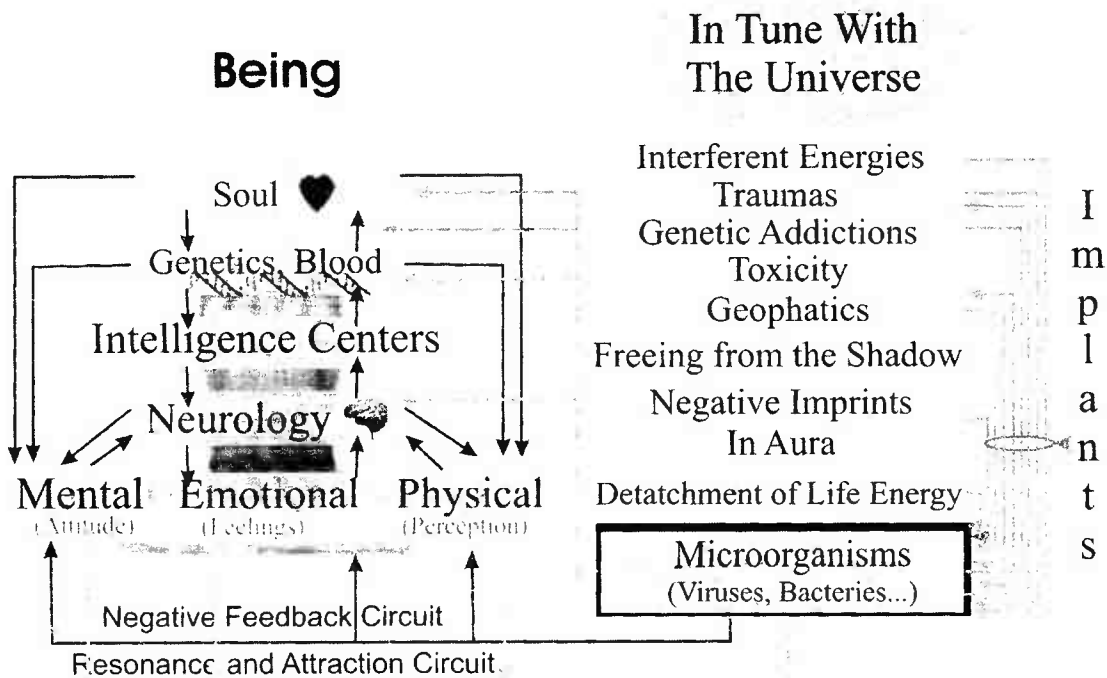
As you can see, I consider the information of **Soul/Genetics/Blood/Spheres of Consciousness** as main blocks besides the traditional Physical/Emotional/Mental. I understand the Energy of the Soul as a high level of consciousness that penetrates every cell, organ, gland, blood and subtle bodies and attaches the Vital Field and the spheres of intelligence. I also consider it keeps memories of our life experiences.

On the right side you can see that there are a few very important concepts to work with, like:

☞ **In tune with the universe.**

- ∞ **Implants (Programs installed to limit humanity by superior intelligences)**
- ∞ **Getting Rid of Shadow**
- ∞ **Energetic Interferences**
- ∞ **DETACHMENT OF LIFE ENERGY**
- ∞ **MICROORGANISMS**

In this summary I'll talk about these two last items because they are KEY CONCEPTS to work with, in order to get a better healing in every balance.



3 – DETACHMENT OF LIFE ENERGY

If we were able to maintain LIFE ENERGY in our VITAL FIELD and in the same way in our glands, organs and cells, we would be happy and healthy. For many reasons we are not able to have it functioning this way, so let us remind some of the main ones:

- ❖ Inherited limiting Patrons (Genetics)
- ❖ Soul dramatic memories
- ❖ Accidents
- ❖ Physical/Emotional/Mental Shocks
- ❖ General Anaesthesia
- ❖ Vaccines
- ❖ Unhealthy Behaviours

All of them have in common that as a result

of them “Our life energy has been thrown out of the body, glands, organs, or tissues and in consequence many biological functions are not working properly.

This is the main reason why micro organisms can build their **base camps** in the body and extend their influence, especially when we are under stressing situations.

4 – MICROORGANISMS – MANKIND RELATION

The relation between mankind and micro organisms comes far from millions of years and we have some hypothesis of their interaction and I believe we should pay great attention to these.

- 1) RESONANCE, ATTRACTION
- 2) BEHAVIOURS THAT PROMOTE THE ENEMY
- 3) NEGATIVE FEEDBACK

4.1) RESONANCE AND ATTRACTION

Humans attract micro organisms by resonance of their energetic fields which means Physical/Emotional/Mental vibration.

For example:

A) If we are in rage, our energetic fields will attract “rabies viruses” or “Hepatitis viruses” or “Herpes”, etc.

B) If we are in the hating of somebody or something we are appealing to many families such as Brucella, Enterovirus, V.I.H., etc.

4.2) BEHAVIOURS THAT PROMOTE THE ENEMY

If our way of feeding, thinking and acting is unhealthy, we will promote

specially the micro organism populations we already have in our body or in our electromagnetic fields. That is why many symptoms are repetitive.

4.3) NEGATIVE FEEDBACK

We have sources of infection, installed directly from our genes or that we get during our gestation or by somebody else’s influence.

Every source is related to an energetic imbalance and is at least engaged to:

- ∞ A type of attitude
- ∞ Certain emotions
- ∞ Some organs/glands
- ∞ Some symptoms (acute or chronic)
- ∞ A DISTORTED PERCEPTION OF LIFE AND BEHAVIOURS (I’d like to emphasise this point)

There is a self-perpetuating cycle where micro organisms **drive us** to the same feelings, behaviours, attitudes that feed them through the vibration of our electromagnetic fields.

We believe that we *own* our behaviours, but we don’t...

THE TRUTH IS THAT VERY OFTEN OUR BEHAVIOURS ARE BEING PROGRAMMED BY THE MICRO-ORGANISMS AND ENERGETIC INTERFERENCES that maintain active the same chips and programs in our body-mind, so they keep us acting against our LIGHT and our HEALTH.

In real life, many of our balances do not have the great effect they should have, because THE SOURCES OF INFECTIONS ARE STILL THERE.

So, even after we have balanced?

A Arribalzaga Multidimensional Biomagnetism

The energetic conditions for virus, bacteria, parasite, fungus, and so on, in most of the cases are still there, "WE HAVE NOT GOT RID OF THEM".

I have evidence of many such cases. So quite a few micro-organisms have developed **many shelters and toxins** to confuse our immune system and are able to maintain their safe refuge. Even using modes very often, they are not detected even though **THEY ARE PRESENT**.

I can prove this in the workshop I shall be holding at this conference. I'll use magnets to challenge the balanced conditions.

5 – BIOMAGNETIC PAIR

The great research by Dr. Isaac Goiz proves that when somebody is ill, there must be at least 2 organs in resonance with opposite chemical "ph" in those organs (glands). His system consists of discovering, which those 2 organs are (glands, issues) and you should place the opposite magnetic field in the 2 organs, and after 20 minutes both are balanced and symptoms disappear. Since 1988 this method has given very good results with any kind of diagnosis (arthritis, diabetes, cancer, VIH, multiple sclerosis...).

There is a map of more than 200 combinations that covers most of our ordinary culturally "so-called diseases".

6 – BIOMAGNETIC MULTIDIMENSIONAL HOLOGRAMS

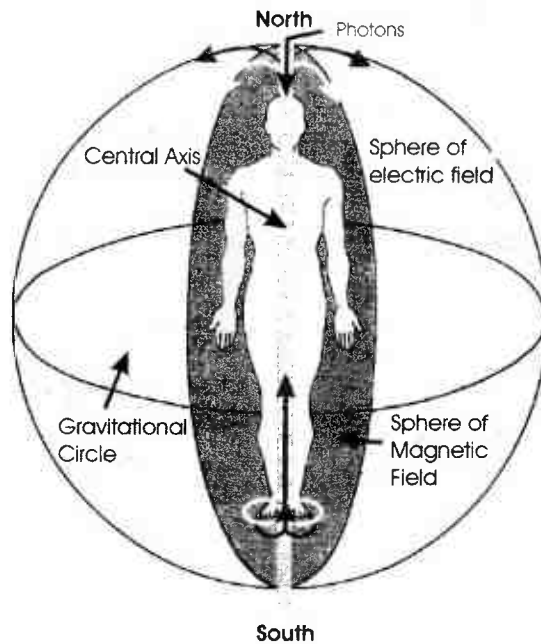
My proposal, though, goes **further and is more complete** for several reasons that I'll explain. With this system we use kinesiology to find out:

- ✦ Where has our LIFE ENERGY been thrown out?
- ✦ Which are the HOLOGRAMS that we have to balance?
- ✦ How the person has to solve the situation in the whole spectrum. (Mind, emotions, soul, genetics, blood, etc.)?
- ✦ What combinations of the Magnets will gently sway The LIFE ENERGY (SOUL GENETICS...) to fill the electromagnetic field? And in consequence **micro organisms died off** and what is more important **their base camps disappear because the energetic fields are balanced and there is no chance to get in.**
- ✦ How many levels we have to check, which are working at the same time? So GENETICS-SOUL-MIND-FEELINGS get fitted in our VITAL FIELD.
- ✦ If meridian and organ energies are in balance at the end of the process.

6.1 – VITAL FIELD

Our vital field is composed of one electric and one magnetic sphere and a gravitational circle interacting between them. This system is sustained by a central axis through which a lot of conscious energy runs and stimulates organs, feelings and behaviours.

This biological system works with the SAME PATRON IN CELLS TOO.



6.2 HOLOGRAMS

I call a hologram (Multidimensional Biomagnetic) a combination of certain key points which, when in balance, maintain the integrity of our VITAL FIELD.

And when there is an impact, shock or sickness, they can help us to get back our "LIFE POWER" and again we feel energized and full of life.

Every hologram is formed by controlling areas from where we can balance the Vital Flow of life/electric, magnetic and photonic waves) in the whole body, glands, organs, etc.

In the seminar we teach the FORMATTING to access to the functioning of 22 glands, and 25 organs, besides the neurological formats.

7 – PROCESS

The main lines of this method are:

We have the Aim in circuit
We find the different events to be balanced
In every event, there will be a situation:

- ✦ To be solved consciously by the client.
- ✦ Energetic Interferences (astrals, negative energies...) should be driven out of the Body/Soul. The method that works best for me is TO COCREATE WITH ANGELS, they help us to get rid of these ill energies in a very easy and quick way.
- ✦ There will be some HOLOGRAMS to be balanced with the magnets at the level of: body, organs, glands, tissues, etc. And so we get back VITAL FORCE.
- ✦ We continue this process until all the holograms are in balance so this way we are sure that "THE ANIMA" is again inside the whole body and in

A Arribalzaga Multidimensional Biomagnetism

every organ and gland that has been affected

- ✦ This also guarantees that the related micro organisms (and infections) disappear. So no more **NEGATIVE FEEDBACK** from **MICRO ORGANISMS** and **ENERGETIC INTERFERENCES**.
- ✦ One of the main requisites to heal is to bring the energy of **FORGIVENESS** for everybody related with the event including the client.
- ✦ In order to erase instinctive defence mechanisms of memory we should massage both lateral spine along the cervical vertebrae and also stretch metatarsals of both legs, what also removes posture memories mainly from the joints.
- ✦ The person gets installed a **NEW PROGRAM OF LIGHT** that he decides to live

EXAMPLE:

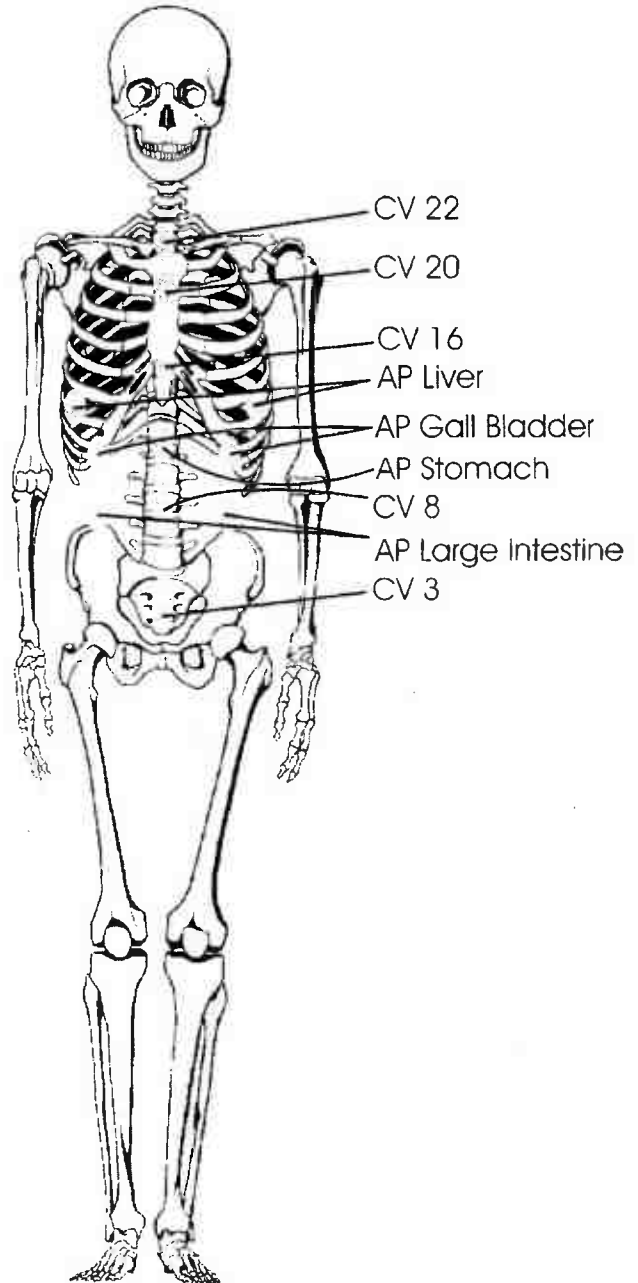
HOLOGRAM Related with the junction of BODY AND SOUL

I shall show the work with the hologram "**When the impact is received UPFRONT**", you can see it on figure

There are 12 controlling areas:

- 1 - CV 3
- 2 - CV 8
- 3 - CV 12
- 4 - CV 16
- 5 - CV 20
- 6 - CV 22
- 7-8 - AP Large Intestine
- 9-10 - AP Gall Bladder
- 11-12 - AP Liver

When we are in shock, part of our **SOUL** energy escapes and as I explained in point 3, there are many reasons why this happens, more often than what we realize.



We do the process of testing lying down and breathing in a special way, open mouth, inhale and exhale long and easy (higher consciousness and free of defence system.)

a) Test for the event that has to be solved by the person assuming new behaviours, attitudes, feelings and specially forgiveness for him or herself and the others.

b) Test for the best way to get rid of Entities who occupied the space when soul energy was collapsed (these interfering energies are linked to the emotions and thoughts of fear of death, being killed or damaged, injured). As I said earlier, I pray to the Angels or to our High Beings with excellent results.

c) We test in every point of the Hologram in order to know which pole (+ or -) must be faced on the body. When it is done properly the HOLOGRAM starts returning, aligning the energy between BODY and SOUL. As a consequence the micro organism will die and their camps will disappear in the BODY plane.

d) Test for other levels, formatting for **neurological** areas, and the functioning of **organs, glands and vertebral ganglions**.

If any appear, we check whether it is the same HOLOGRAM, and if yes, we just **put the format** in circuit. If it is not, we test which other HOLOGRAM is needed.

We follow this process until all the frames in the healing model are balanced.

If we miss points b) and c), we are probably maintaining THE ENEMIES OF LIFE Inside, still alive.

e) We install the NEW PROGRAM IN THE LIGHT

f) We thank God, spiritual masters, Angels and our beings for all the help we have received.

g) We ask for this healing to be extended to all humanity and the universe.

Note: Other courses developed by Alberto Arribalzaga:

- ☞ Kinesiology and Angelic Groups A and B
- ☞ Kinesiology and Advanced Multidimensional Biomagnetism
- ☞ Kinesiology and Mayan Healing Wheel

MODES

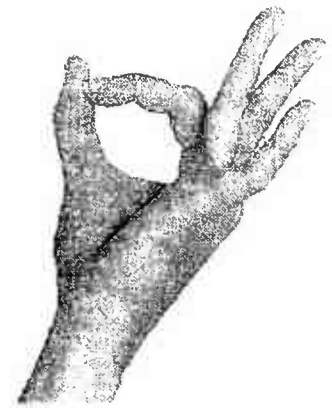
BACTERIAS



VIRUS



CANDIDA



ALLERGIES



ORGAN

ORGANO



GLAND

GLANDULA



PHYSIOLOGY

FISIOLOGÍA



ANATOMY - CELL

ANATOMIA - CÉLULA



INTERFERENT ENERGIES

